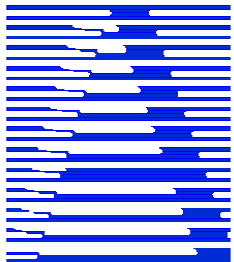




**SPINNAKER CORPORATION**  
*EQUIPMENT AND PROCESS SOLUTIONS*

# *TRIM SYSTEMS*

**Pneumatic Trim Systems & Conveying Systems**



**AirTrim®**

# Intakes, Custom Fabricated



# Quick Fit Ductwork Distributor

- Quick Connect Flanges
- Adjustable Length Duct Sections



# Jumbo Inducers





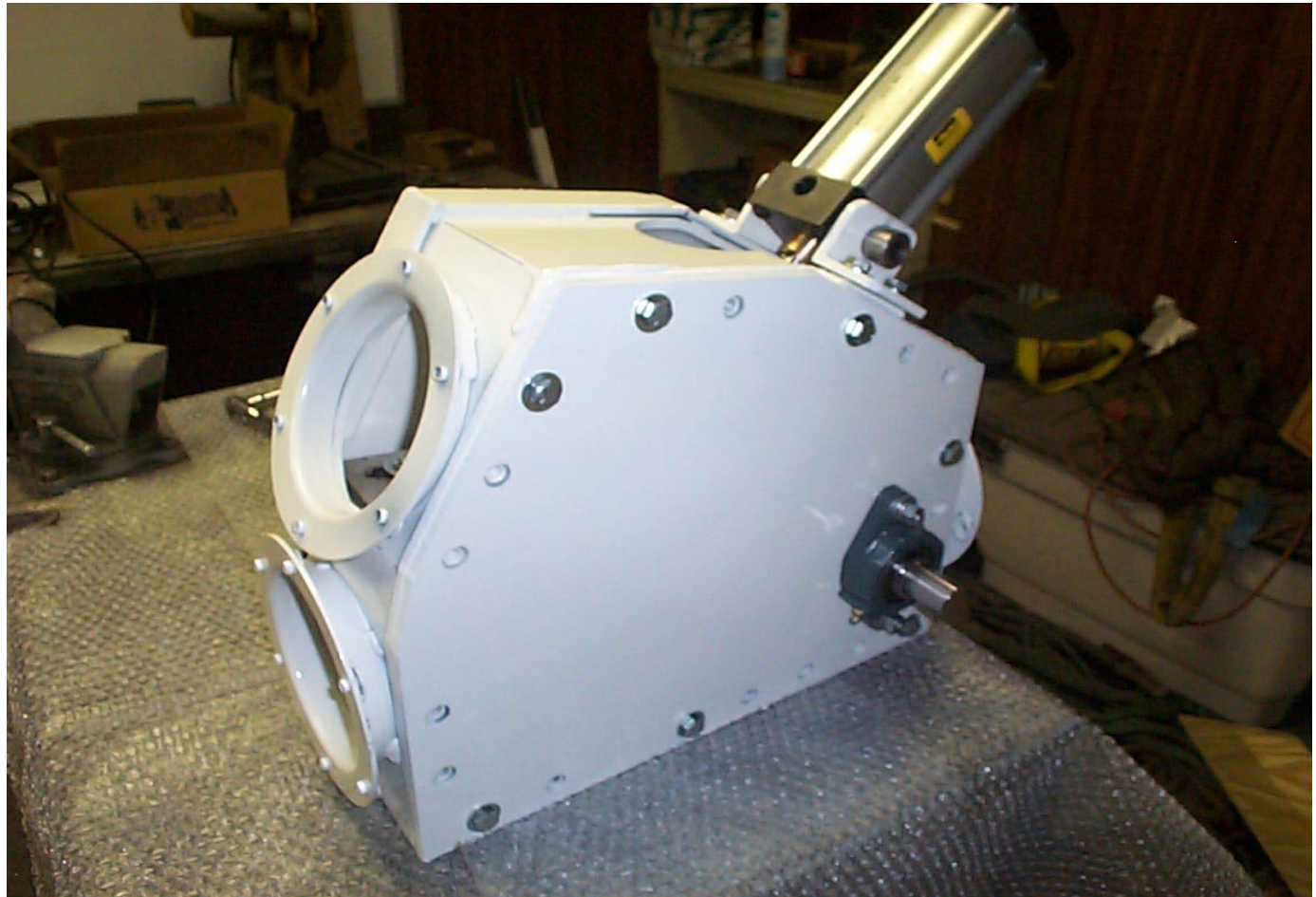
# Perforated Vent Sections

Air bleed off to reduce air into pulper



# Inline Chopper/Diverter Hi Flo

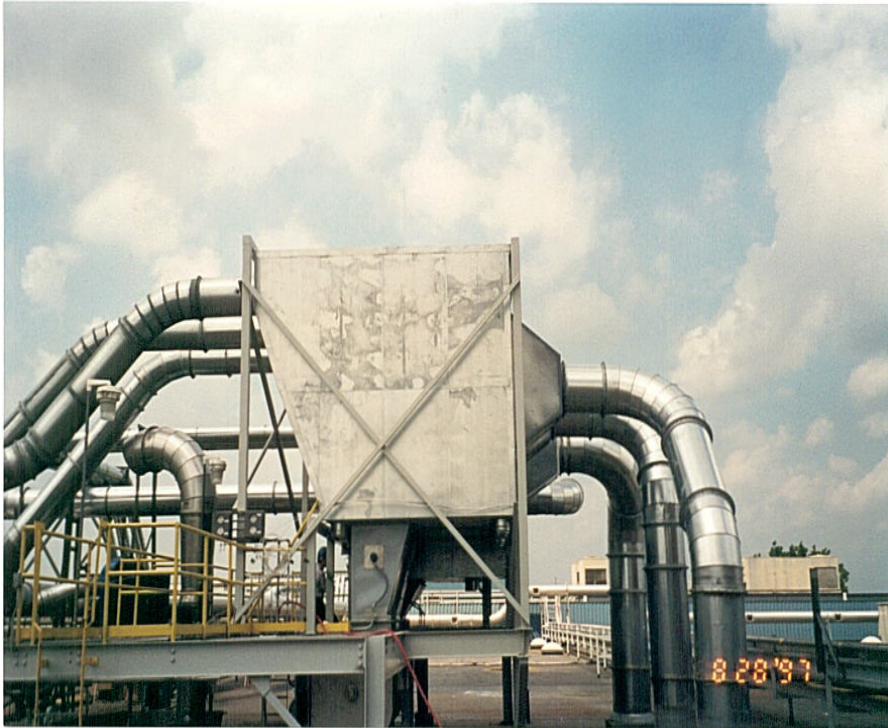
- Hi speed chopping and diverting
- Set to length. Multiple stream capabilities
- Patented





# Air Separators

- Fabric separators (rectangular or cylindrical)
- Cylindrical and Cyclone Types

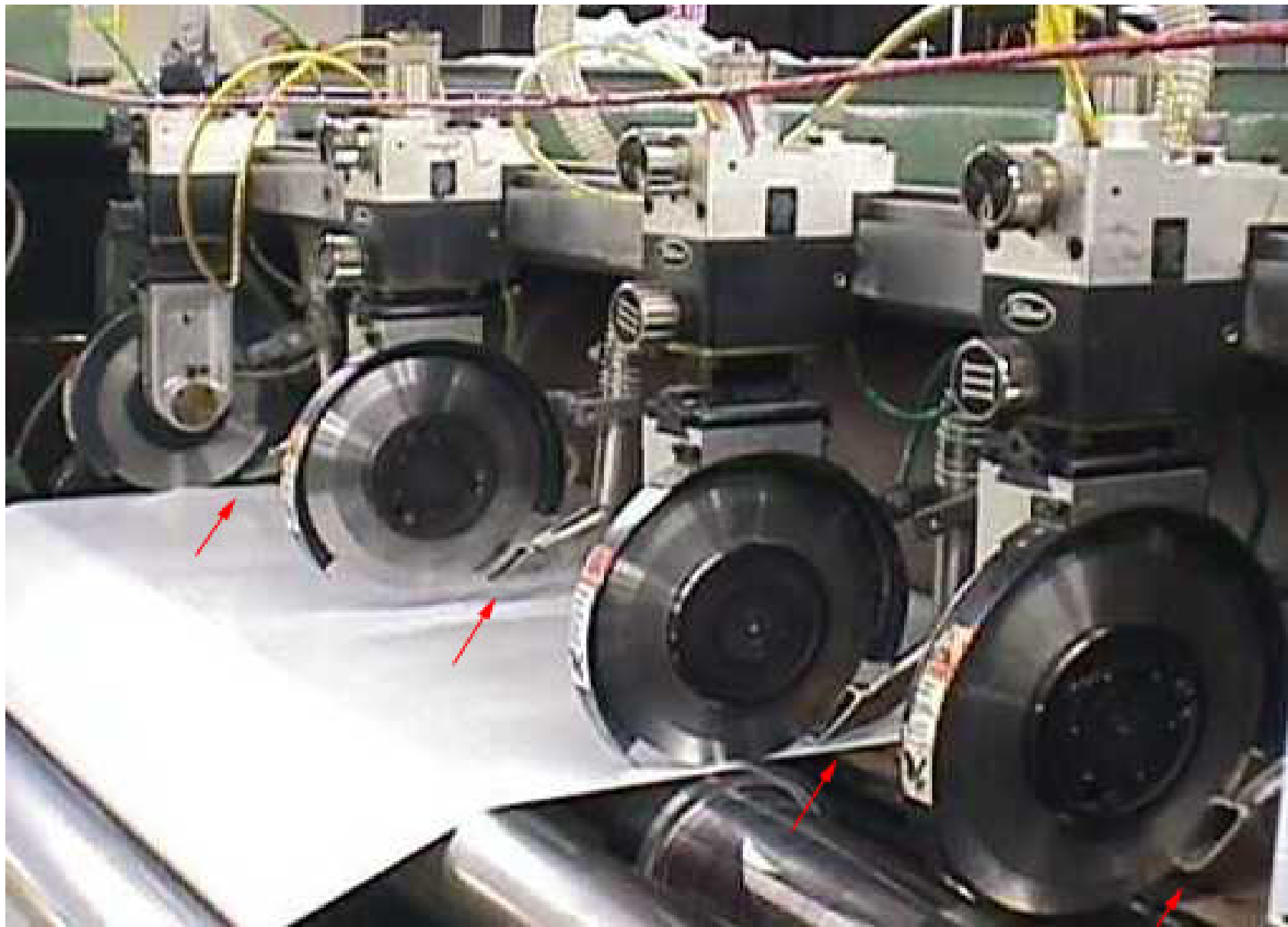


# Dust Collection & Removal





# Slitter Dust Systems



# Technical Services

- Complete mechanical installation
- Install supervision & start up assistance & training
- Trouble Shooting and Engineering Studies



# Paper Machines, Winders, Sheeters





# Patented Adjustable Inducer



# In-line Adjustable Inducer





# Quick-Fit Ductwork





# Quick-Fit Ductwork



# Site Glass





# Perforated Vent Section/Clean Out





# Pulper Discharge w/Spray Nozzle



# Wet Scrubber





# Wet Scrubber Air Discharge







**SPINNAKER CORPORATION**

*EQUIPMENT AND PROCESS SOLUTIONS*

3876 Whitetail Court

Hobart WI 54155

Ph: 920-265-0941

Fax: 920-227-4178

Email: [info@spin-corp.com](mailto:info@spin-corp.com)